

# CERTIFICATE OF LOCATION OF GOVERNMENT CORNER

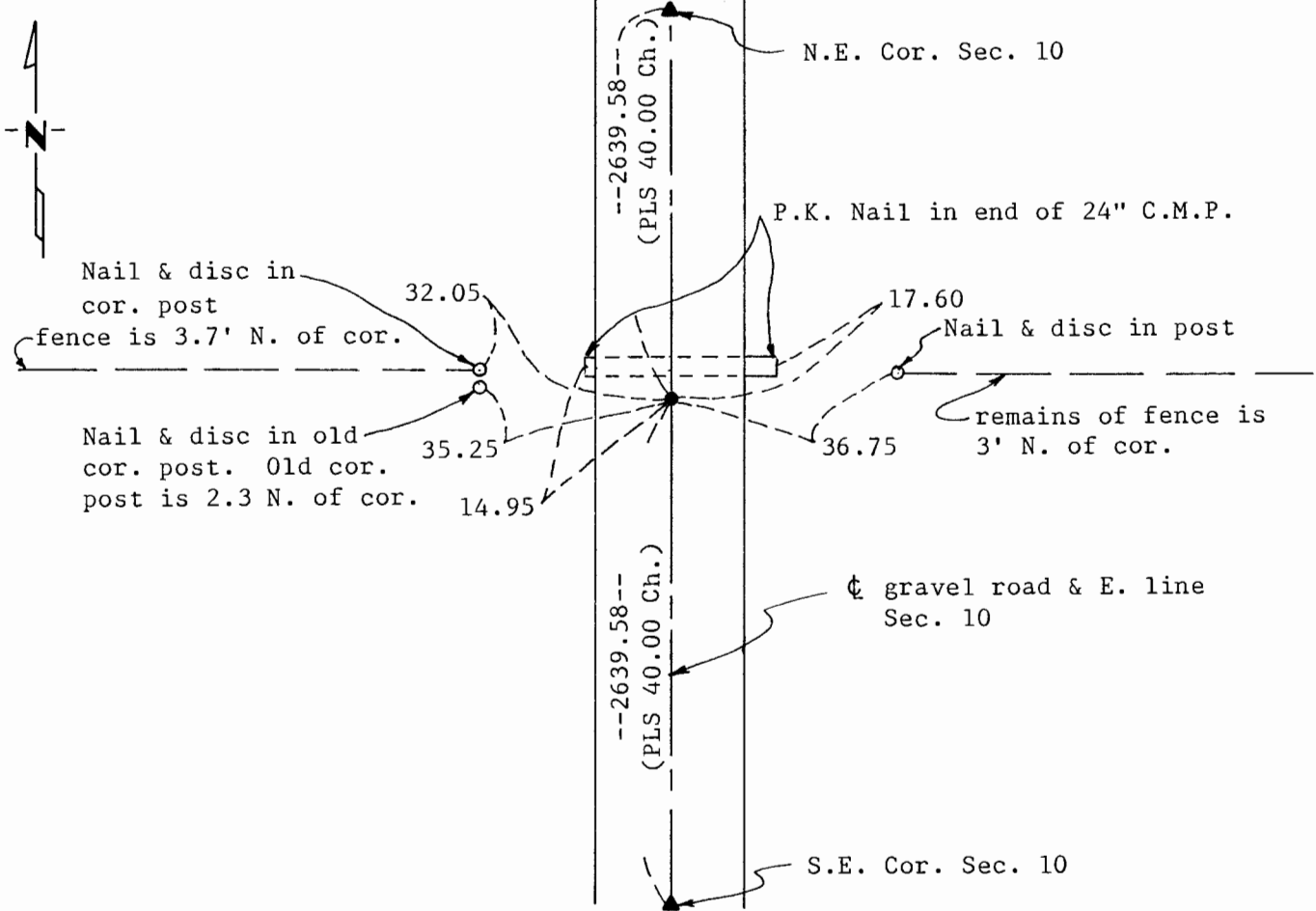
East Quarter \_\_\_\_\_ Corner of Section 10, Township 108 N., Range 42 W., 5th P.M.

STATE OF MINNESOTA, County of Murray

At the corner location shown on the sketch:

- On \_\_\_\_\_ found a \_\_\_\_\_  
DATE
- left monument as found,  lowered monument,  removed monument (explain)
- On 12-14-87 placed a 3/4: 0.D. x 24" iron monument marked with Reg. No. 13593 midway between N.E. & S.E. Sec. corners. (See back for details).  
DATE

### SKETCH OF REFERENCE TIES



Statement of evidence relative to this corner location is on back of page.

I hereby certify that this document and the data contained herein was prepared by me or under my direct supervision.

*John Madson*  
SIGNATURE

2-1-88  
DATE

Registration No. 13593

- Land Surveyor,  Professional Engineer
- County Surveyor,  County Engineer

### OFFICE OF THE COUNTY RECORDER

County of Murray

I hereby certify that this document was filed in the Co. Recorders office at 10 A.M. on the 2nd day of February A.D., 19 88

County Recorder James V. Johnson

By \_\_\_\_\_, Deputy

DOCUMENT NO. \_\_\_\_\_

Statement of Evidence: E. 1/4 Cor. Sec. 10-108-42, Murray County

The corner was originally established during the Public Land Survey of Skandia Township during the 1860's.

There were no records from the Murray County Highway Department pertaining to this corner.

On December 12, 1987, I dug in the vicinity of the corner with a backhoe and found over a dozen stones. the corner is in an area where a swamp existed prior to the road being built. The stones were probably put there to help form the road grade. There was also a culvert crossing the road a few feet north of the corner location. I set a 3/4" O.D. x 24" iron monument marked with Reg. No. 13593 midway between the Northeast (2639.58) and Southeast (2639.58) section corners.